

REENCHIP

**GreenPOS™ LED Driver  
GP8000 Series  
AC Direct Drive Solution  
(GP8110Q)**

**v1.2**  
SPECIFICATION

**REVISION HISTORY**

Version	Date	Revision Contents
V1.0	August 2015	Release version
V1.1	September 2015	Revised application circuit parameter
V1.2	September 2015	Revised application table parameters

Copyright © 2009 by GreenChip Inc. - All Rights RESERVE.

GreenChip owns all right, title and interest in the property and products described herein, unless otherwise indicated. No part of this document may be translated to another language or produced or transmitted in any form or by any information storage and retrieval system without written permission from GreenChip.

GreenChip reserves the right to change products and specifications without written notice. Customers are advised to obtain the latest versions of any product specifications.

GREENCHIP MAKES NO WARRANTIES, EXPRESSED OR IMPLIED, OF MERCHANTABILITY OR FITNESS FOR A PARTICULAR PURPOSE, OTHER THAN COMPLIANCE WITH THE APPLICABLE GREENCHIP SPECIFICATION SHEET FOR THE PRODUCT AT THE TIME OF DELIVERY. IN NO EVENT SHALL GREENCHIP BE LIABLE FOR ANY INDIRECT, INCIDENTAL OR CONSEQUENTIAL DAMAGES AS A RESULT OF THE PRODUCT'S PERFORMANCE OR FAILURE TO MEET ANY ASPECT OF SUCH SPECIFICATION.

GREENCHIP PRODUCTS ARE NOT DESIGNED OR INTENDED FOR USE IN LIFE SUPPORT APPLIANCES, DEVICES OR SYSTEMS WHERE A MALFUNCTION OF A GREENCHIP DEVICE COULD RESULT IN A PERSONAL INJURY OR LOSS OF LIFE. CUSTOMERS USING OR SELLING GREENCHIP DEVICES FOR USE IN SUCH APPLICATIONS DO SO AT THEIR OWN RISK AND AGREE TO FULLY INDEMNIFY GREENCHIP FOR ANY DAMAGES RESULTING FROM SUCH IMPROPER USE OR SALE.

Information contained herein is presented only as a guide for the applications of our products. GreenChip does not warrant this product to be free of claims of patent infringement by any third party and disclaims any warranty or indemnification against patent infringement. No responsibility is assumed by GreenChip for any patent infringement resulting from use of its products by themselves or in combination with any other products.

No license is hereby granted by implication or otherwise under any patent or patent rights of GreenChip.

The GreenChip logo is a registered trademark of GreenChip.

# GP8110Q

## 1 TAP DIRECT AC LINE LED DRIVER

### GENERAL DESCRIPTION

The GP8110Q is 1 TAP Direct AC Line LED Driver. Output Current is designed to be max. 80mA by R(EXT) and is invariant to the output voltage variation, ambient temp. variation.

The GP8110Q can work as switch or current regulation, Therefore it is suitable for regulating the current with simple one terminal LED String which is very low cost.

It is also suitable for regulating the current with multi terminal LED String which is the good THD.

The PCB design of applications is also flexible to meet various requirements.

The GP8110Q is especially suitable for applications of low cost LED lighting which replaces bulb, tube lamp etc.

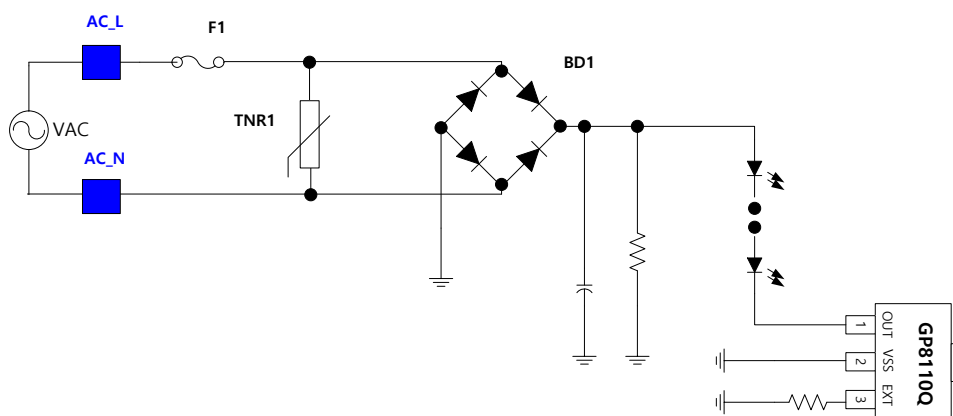
### FEATURES

- Direct AC Line 1TAP LED Driver with max. 80mA constant current
- Precision of constant current : <  $\pm 5\%$
- Wide input voltage range : max. AC 265V, DC 400V
- Minimum number of external components
- Simple circuit and low cost
- Excellent EMC performance
- High efficiency achieved
- High PF and Low THD using multi-terminal control method
- Excellent TRIAC dimming controller
- Available up to 12W
- Protection : Thermal Shutdown with hysteresis, Temp. compensation
- Operation temperature :  $-40^{\circ}\text{C} \sim 125^{\circ}\text{C}$

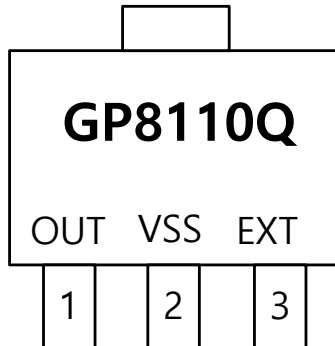
### APPLICATIONS

- Direct AC Line LED Driver up to 12W
- LED Bulb lamp
- T5/T8 LED tube lamp
- LED Street lighting

### Typical Application



## PKG PIN Description / Marking SPEC



### MARKING INFORMATION (SOT89-3L)

**GP8110Q**

**YYWW**

- GP8110Q : Device Code
- YY : Year Code / WW: Week Code

PIN Name	PIN No.	Description
OUT	1	Output Terminal
VSS	2	Ground
EXT	3	Output Current Setting Terminal

## ABSOLUTE MAXIMUM RATINGS

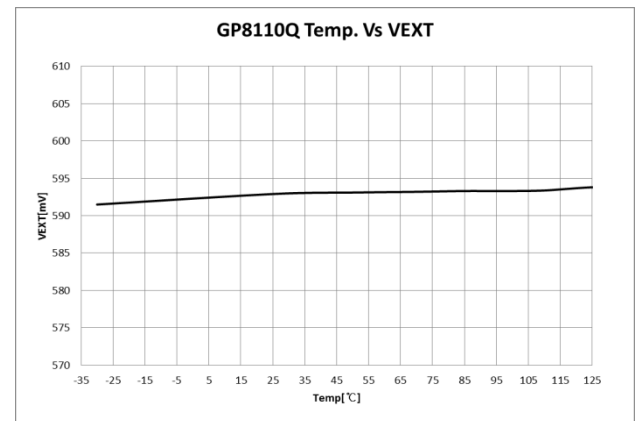
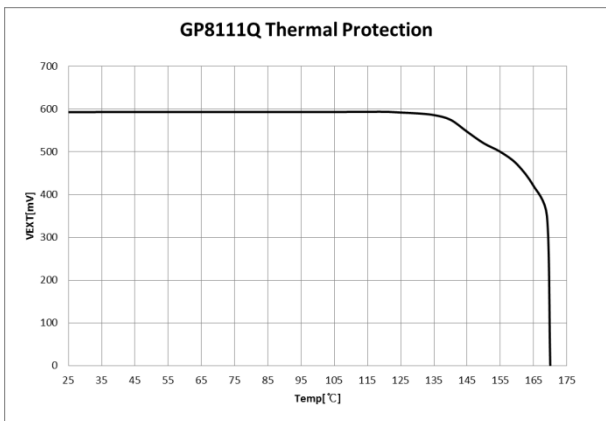
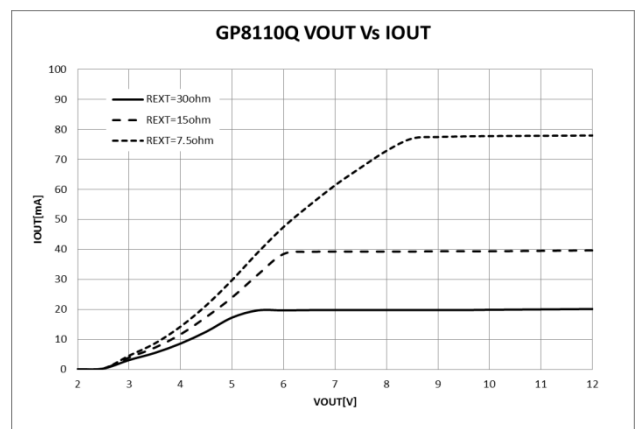
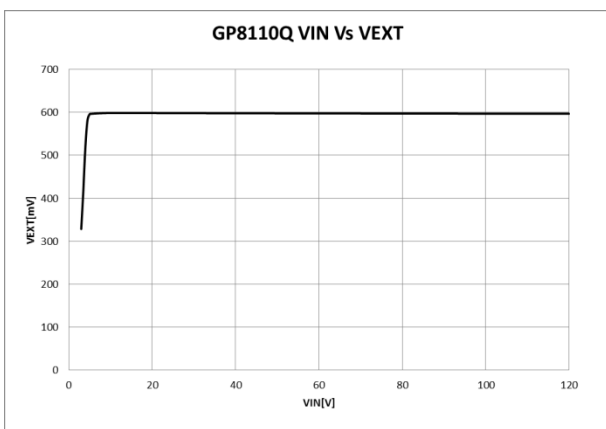
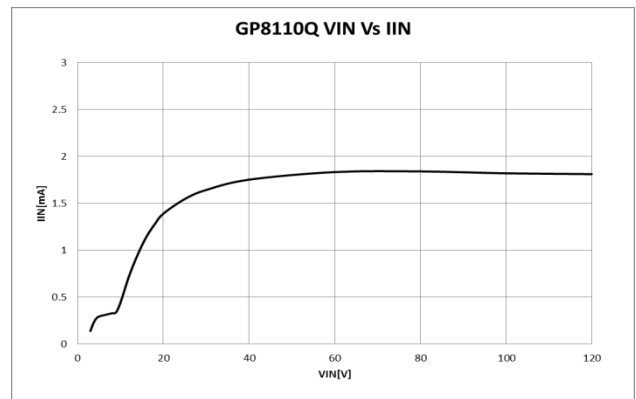
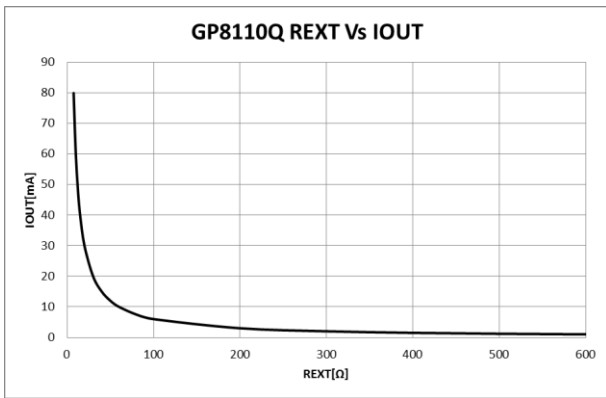
CHARACTERISTICS	Symbol	Value	Unit
Line Voltage	VIN	-0.3 ~ +450	V
Output Voltage	VOUT	-0.3 ~ +450	V
Output Current	IOUT	100	mA
External Voltage	VEXT	-0.3 ~ +6.5	V
Operating Temperature	Topr	-40 ~ +125	°C
Storage Temperature Range	Tstg	-50 ~ +150	°C
Junction Temperature	TJ	150	°C
Thermal resistance(SOT89)	ROJA	250	°C/W

## DC ELECTRICAL CHARACTERISTICS

© Ta=25°C, VIN=VOUT=20V, REXT=6 kΩ unless otherwise specified

No	Characteristic	Symbol	Test Condition	Min.	Typ.	Max.	Unit
1	Max. Input Voltage	VIN_max	-	400	-	-	V
2	Min. Input Voltage	VIN_min	-	8	-	-	V
3	Max. Output Voltage	VOUT	-	400	-	-	V
4	Output on Resistance	Rout	VIN=10V	-	80	-	Ω
5	Output Current	IOUT	-	5	-	80	mA
6	Supply Current 1	IIN1	VIN=8V, REXT=Open	0.1	0.3	1.2	mA
7	Supply Current 2	IIN2	VIN=40V, REXT=Open	0.8	1.8	3.6	mA
8	Supply Current 3	IIN3	VIN=400V, REXT=Open	0.8	1.8	3.6	mA
9	EXT Voltage	VEXT	-	562	590	618	mV
10	Min. Dropout Voltage 1	VD1	IOUT=40mA	-	5.5	7.5	V
11	Thermal TRIP	Ttrip	-		130		°C
12	Thermal Shut Down	TSD	-		170		°C
13	Hysteresis temperature	Thys	-		20		°C

## TYPICAL Performance Characteristics



## Typical Application TABLE

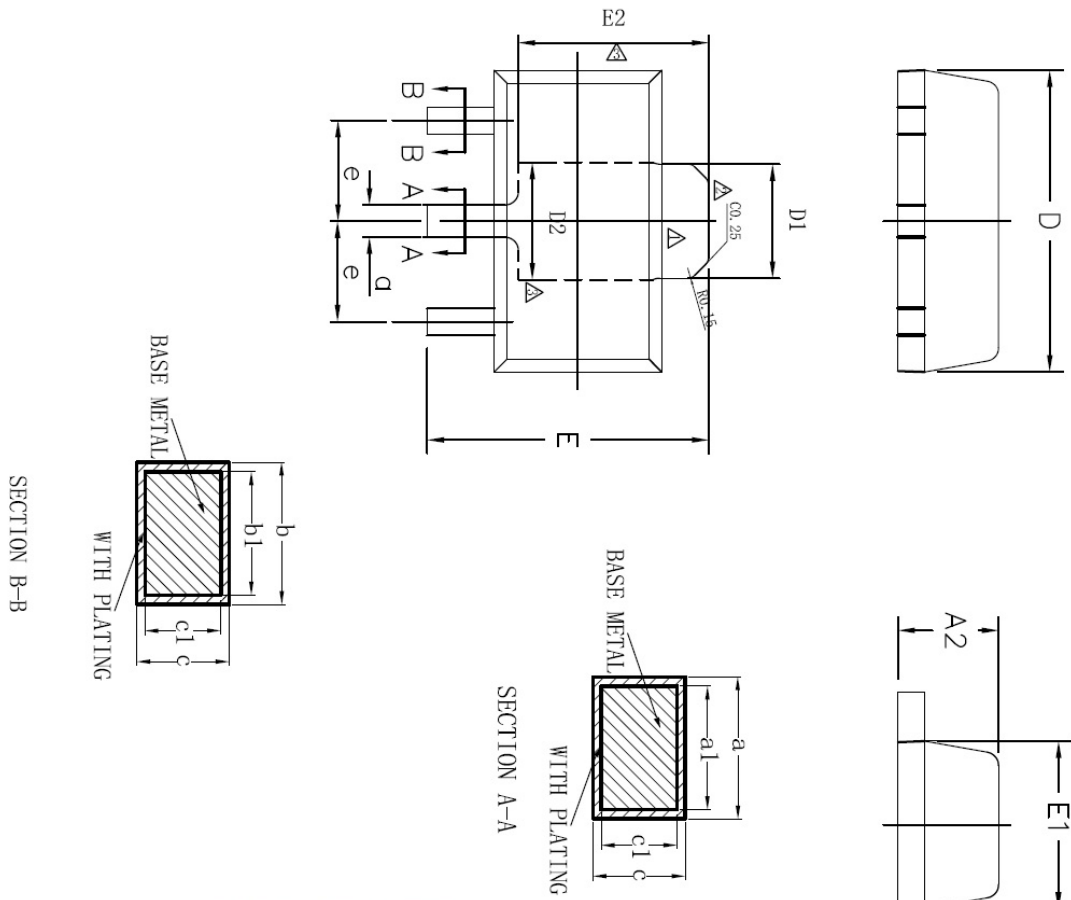
GP8110Q can be applied for various applications, cost effectiveness, characteristics etc. Refer to the various application table below, could be chosen the optimal solution according to the project situation.

Related application note and demo board are available upon customer's requests.

◎Excellent ○Good △Not good

Driving Method	TAP	IC	Electrolytic Capacitor	COST	Power Eff.	PF	THD	Flicker (%Flicker)	TRIAC Dimming
Method 1 (GPAN042)	1	1	1	○	◎ (90% ↑)	△ (0.5 ↑)	△ (80% ↓)	Flicker Free	△
Method 2 (GPAN043)	1	1	0	◎	◎ (90% ↑)	○ (0.85 ↑)	△ (50% ↓)	100%	△
Method 3 (GPAN044)	2	2	0	○	○ (80% ↑)	○ (0.9 ↑)	○ (30% ↓)	30% ↓ w/ E CAP.	△
Method 4 (GPAN045)	3	3	0	△	◎ (85% ↑)	◎ (0.95 ↑)	◎ (20% ↓)	30% ↓ w/ E CAP.	△
Method 5 (GPAN046)	2	3	0	△	○ (80% ↑)	◎ (0.95 ↑)	◎ (20% ↓)	30% ↓ w/ E CAP.	◎

PKG Dimensions (SOT89-3L)



SYMBOL	MILLIMETER		
	MIN	NOM	MAX
A2	1.40	1.50	1.60
b	0.38	—	0.47
b1	0.37	0.40	0.43
c	0.36	—	0.46
c1	0.35	0.38	0.41
a	0.46	—	0.56
a1	0.45	0.48	0.51
d	0.36	—	0.46
d1	0.35	0.38	0.41
D	4.30	4.50	4.70
D1	1.70 REF		
D2	1.75 REF		
E	4.00	4.20	4.40
E1	2.30	2.50	2.70
E2	2.84 REF		
e	1.50 BSC		
L1	0.80	1.00	1.20