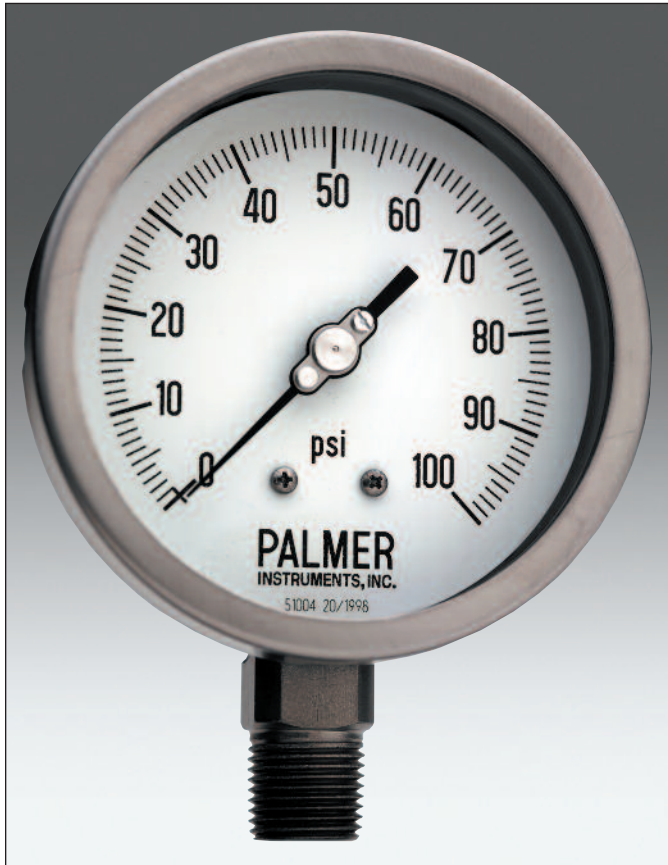


Models 25CS • 25SS • 40SS • 60SS

All Stainless Steel Gauges



A complete line of high strength Gauges.

Temperature Errors: For a normal temperature of 68° F (20° C) approximately +0.3% error for a temperature increase of 18° F and -0.3% error for a temperature decrease of 18° F (10°C).

Refer to order matrix for dual scale codes.

Accuracy		
Dial Size	Fill	Accuracy
25CS	Dry	1.5%
	Glycerin	
25SS	Dry	1.5%
	Glycerin	
40SS	Dry	1%
	Glycerin	
60SS	Dry	1%
	Glycerin	

- Built-In Over-Range and Under-Range Protection
- Welded Socket to Case on 6"
- Reinforced Sector Improves Accuracy Over Life of Gauge
- 4" & 6" Gauges Come with Removable Stainless Steel Restrictor

Durable and corrosion resistant, our Stainless Steel gauges are made to provide maximum protection in harsh conditions.

Specifications

Case: AISI 304 Stainless Steel in 2-1/2" (63 mm), 4" (100mm), and 6" (150mm) diameter. Case and socket welded together on 6" gauges.

Fill: Glycerine Filled or Dry, (Dry gauges can be filled). Silicone optional on 4" and 6" gauges.

Ring: AISI 304 Polished Stainless Steel, Bayonet Connection on 25SS, 40SS, and 60SS. Crimped Bezel Ring on 25CS.

Window: Instrument Glass. Safety Glass optional on 4" and 6" gauges.

Socket: AISI 316 Stainless Steel. Ranges over 200PSI on 4" and 6" gauges come with removable Stainless Steel Restrictor. No restrictor on 2-1/2" gauge.

Connection: 1/4" on 2-1/2", 1/2" NPT on 4" and 6", Optional 1/2" F to 1/4" M NPT SS Adaptor.

Bourdon Tube: All Pressure Sensing Elements are AISI 316 Stainless Steel. All 2-1/2" gauges less than 600 PSI, and 4" and 6" gauges less than 1000 PSI range use a C-tube configuration. All other gauges use a spiral tube.

Movement: Stainless Steel.

Pointer: Balanced Black Aluminum. Micrometer adjustable in 25SS, 40SS, and 60SS only.

Dial: White Aluminum with black markings in accordance with ASME B40.1 -2005.

Range Availability: PSI, Metric, and Dual Scales. See information on pg 9.

Process Fluid Temperatures: 212°F (100°C) maximum for standard tube and socket materials.

Overpressure Limits: As a percent of full scale value:

- 30% for ranges up to 870 PSI (60 Bar).
- 25% for ranges from 870 to 1400 PSI (100 Bar).
- 15% for ranges above 1400 PSI (100 Bar).

Overpressure in excess of these values may affect calibration but will not damage the movement due to the mechanical stops.



Models 25CS • 25SS • 40SS • 60SS

All Stainless Steel Gauges

Industrial Gauges
All Stainless
Steel Gauges

Ordering Guide

1) Case Size

25	2-1/2" (63mm)
40	4" (100mm)
60	6" (150mm)

2) Case Material / Style

C SS with Crimped on Bezel Ring (2-1/2" only)
S Stainless Steel with Bayonet Bezel Ring

3) Element Material

S Stainless Steel Bourdon Tube

4) Fill

D Dry
W Wet

5) Mounting

L Stem Mount, Lower Connected
B Stem Mount, Back Connected
U Flush Mount, Back Connected, U Clamp
F Flush Mount, Back Connected, Front Flange
I Surface Mount, Lower Connected, Rear Flange

6) Connection

H 1/2" NPT (40SS, 60SS only)
Q 1/4" NPT (25SS, 24SS only)

7) Range / Scale

PSI Ranges

10#	0-10psi ¹
15#	0-15psi
30#	0-30psi
60#	0-60psi
100#	0-100psi
160#	0-160psi
200#	0-200psi
300#	0-300psi
400#	0-400psi
500#	0-500psi
600#	0-600psi
800#	0-800psi
1000#	0-1000psi
1500#	0-1500psi
2000#	0-2000psi
2500#	0-2500psi ¹
3000#	0-3000psi
4000#	0-4000psi
5000#	0-5000psi
6000#	0-6000psi
10,000#	0-10,000psi
15,000#	0-15,000psi ¹
20,000#	0-20,000psi ¹

¹ not 25CS

Compound Ranges

-30" Hg/0#	30"Hg/0-psi
-30" Hg/15#	30"Hg/0-15psi
-30" Hg/30#	30"Hg/0-30psi
-30" Hg/60#	30"Hg/0-60psi
-30" Hg/100#	30"Hg/0-100psi
-30" Hg/150#	30"Hg/0-150psi
-30" Hg/200#	30"Hg/0-200psi
-30" Hg/300#	30"Hg/0-300psi

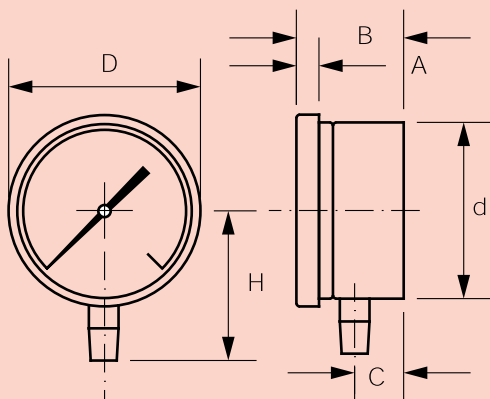
Metric Scales
Bar, kg/cm², kPa
Single or Dual Ranges available

8) Options

G Safety Glass
S Silicone Fill
V 1/2" to 1/4" SS Adaptor
No options on 25SS

Filled Gauge
IP64 COMPLIANT

Dry Gauge
IP54 COMPLIANT



THE RIGHT GAUGE FOR YOUR APPLICATION....

Our sales agents and factory engineers are ready to help you with your application.

If you don't find a gauge with the features that fit your needs, please contact our Customer Service department and we will work with you to build the right product for your installation.



Register your product at www.palmerwahl.com/register

Specifications subject to change without notice.

PALMER Wahl
INSTRUMENTATION GROUP
Continuous Innovation Since 1836
ISO 9001:2008 CERTIFIED