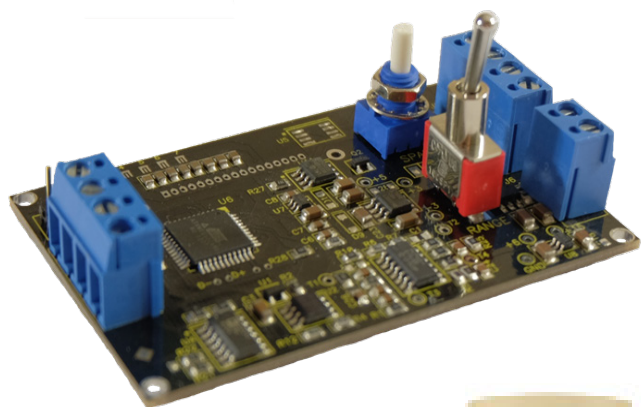


EMD-485 OEM Oxygen Transmitter



Low Cost Trace or Percent Oxygen Transmitter
 4 - 20mA Analog Output and 0 - 1 VDC
 New Updated Microprocessor Based Design
 Factory Configurable Ranges
 Optional Display, Sensor, Sensor Housings

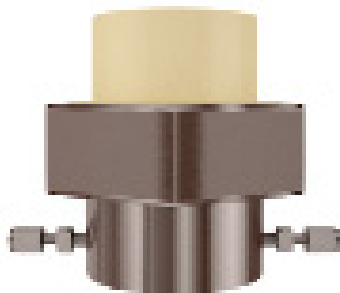
Specifications:

Ranges:	Two Pre-Configured (See Options)
Accuracy:	+/- 1% Full Scale Range*
Calibration:	Every 2—3 Months
Calibration:	On Board Potentiometer
Classification:	General Purpose
Connections:	See Options
Dimensions :	Board:
Display:	None
Flow:	0 — 5 SCFH
Output:	4-20mA & 0 - 1VDC
Power:	12 - 24VDC
Response time:	T90 in 10 Seconds
Sensor (Optional):	TO2-1x Trace Oxygen
Sensor Life:	15—21 months
Temperature:	0—50 Deg C
Warranty:	9 Months Sensor
Warranty:	12 Months Electronics

*Accuracy at constant conditions



H1 KF-40



H3 Flow Throw



TO2-1x O2 Sensor

Applications:

- Inert Glove Box Systems
- Nitrogen and O2 PSA Generators
- Laboratories & Universities
- Beverage Grade CO2 Monitoring
- Air Separation Plants
& Many Others

Optional Accessories:

- Optional Ranges:
- 10/100/1000ppm/1%/5%/10%/25%/100%
(Other Ranges Available on Request)
- H3 Flow Through Sensor Housing 1/8"
- H1 Direct Install KF-40 Sensor Housing
- Optional Graphical Display W/ Backlight
- Other Customization Packages Available

"Inquiry for Application Expertise"